

NO. 029 Lingual Tonsil

<ul style="list-style-type: none">➤ 肉眼下觀察，可見到像是一個 nodule，中間有 lymphocyte 大量聚集 (Fig. 1 blue ↑)，但顯微鏡下可見這些 lymphocyte 皆為正常。➤ 因 lymphoid tissue 沒有 capsule 包圍且上方覆蓋 hyperparakeratotic oral squamous epithelium (Fig. 2 yellow ↑)，故判定此為 lingual tonsil 而非 lymph node。➤ Lymphoid tissue 中可見 germinal center (Fig. 3 red ↑) 與 crypt epithelium (Fig. 3 green ↑)。	<p>標記重點：</p> <ol style="list-style-type: none">1. Hyperparakeratotic 角質層 (Fig. 2 yellow ↑)2. Rete peg 平坦 (Fig. 2 yellow ↑)3. Lymphoid tissue (Fig. 1 blue ↑)4. Germinal center (Fig. 3 red ↑)5. Crypt epithelium (Fig. 3 green ↑)
--	---

Fig. 1

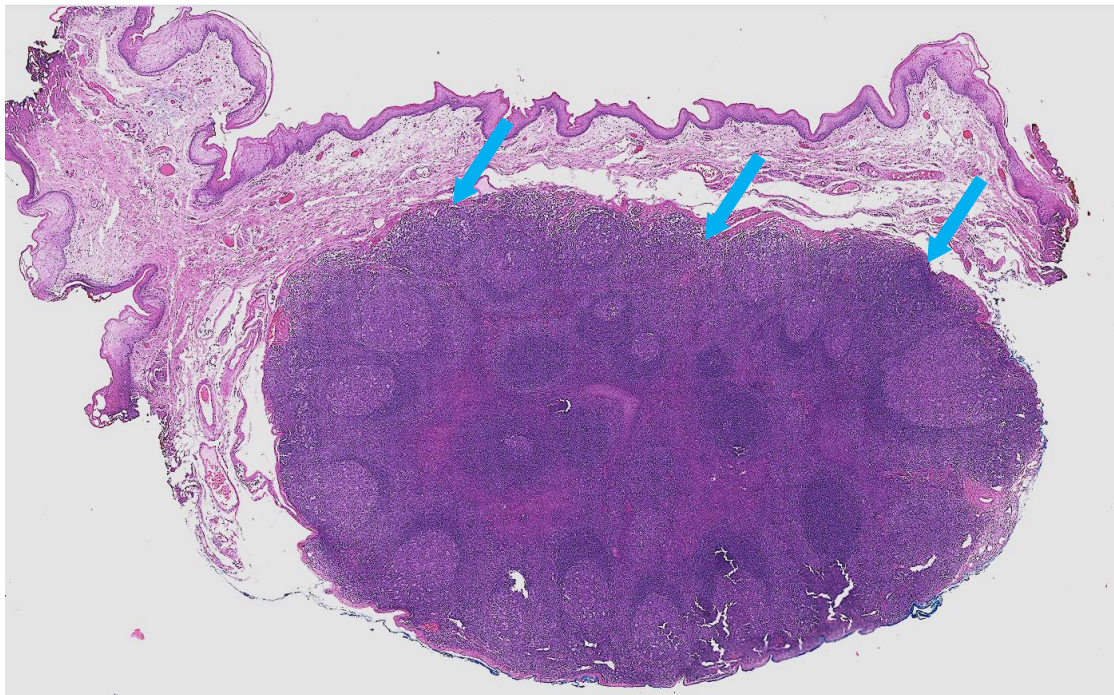


Fig. 2

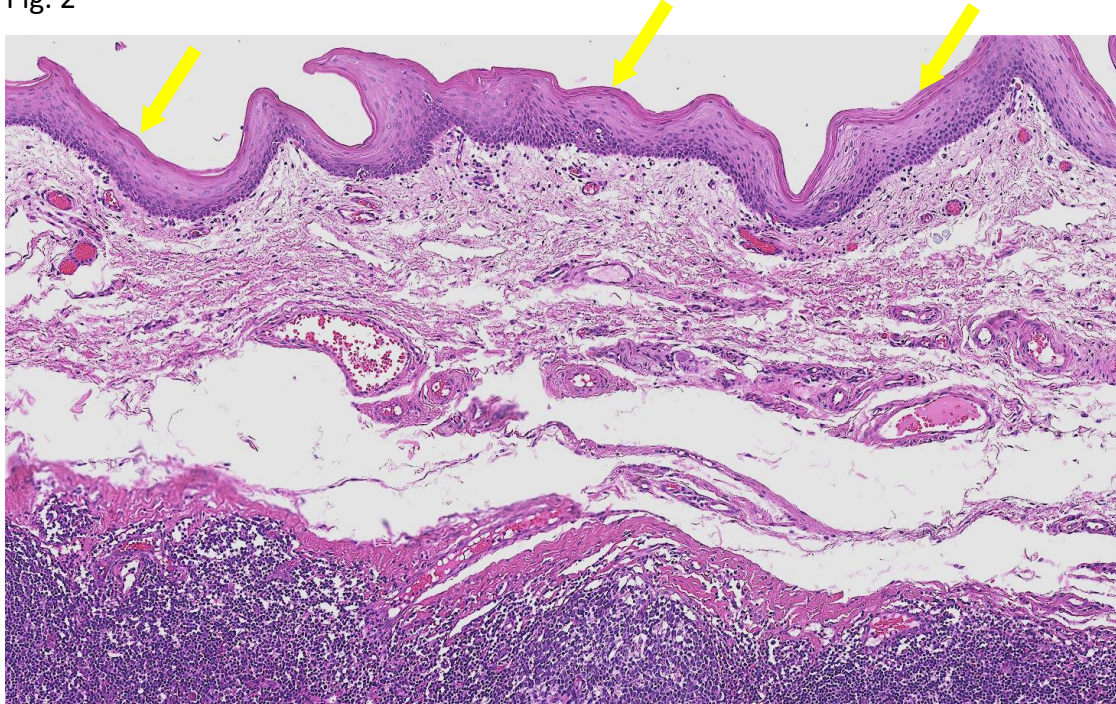


Fig. 3

